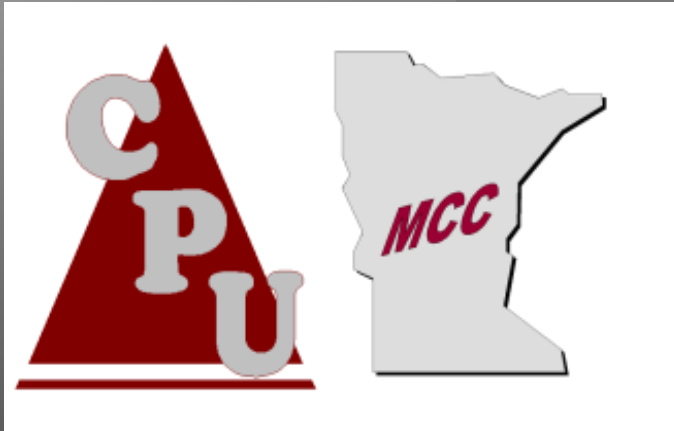


COMPUTER PROFESSIONALS UNLIMITED INC.



Computer Professionals Unlimited Inc. (CPUI) was established in 1986 to market IBM mini computers, to Minnesota cities and counties. In 1993, starting with 8 counties, CPUI began to provide an affordable solution to the computerization of local government information and quality data processing services, based on aggressive marketing and solid programming. CPUI currently holds major contracts with 29 counties through the year 2023. CPUI provides customized programming, on-site and telephone support, management for information systems, and consulting for hardware and software for counties belonging to ***Mid-State Computer Cooperative (MSCC)***, including programming and support for real estate tax billing, payroll/personnel, general ledger, highway cost accounting, fixed assets, computer aided mass appraisal (CAMA) , cash register, land calculation , planning and zoning, social welfare system, county collection system, and treasurer's financial.

CPUI currently has 17 employees with over 150 years of county government and computer experience.

MAJOR MODULES

- Real Estate Tax Billing
- Real Estate Tax Billing Web Access
- Computer Aided Mass Appraisal
- Integrated Financial System
- Payroll
- Payroll Web Portal
- Payroll e-Time
- Human Resource
- Cash Receipts
- Highway Costing
- Planning and Zoning
- Capital Assets

REAL ESTATE TAX

- Real estate tax package contains several sub-modules
 - *Maintenance of parcel ID, taxpayers, values, etc.*
 - *Calculation of vets and homestead exclusions*
 - *Calculation of taxable mkt and tax capacity values*
 - *Tax calculation, tax reporting and tax statements*
 - *Collection of taxes and settlement to tax*
 - *Tax data extracted to a tax web*
- Other modules included in the real estate tax; delinquent tax, tax increment, special assessments, transmission and distribution lines, powerline, solid waste, mobile homes, mineral interest, report generator, and sales ratio.



Currently, 29 counties are participating in this module

PRISM

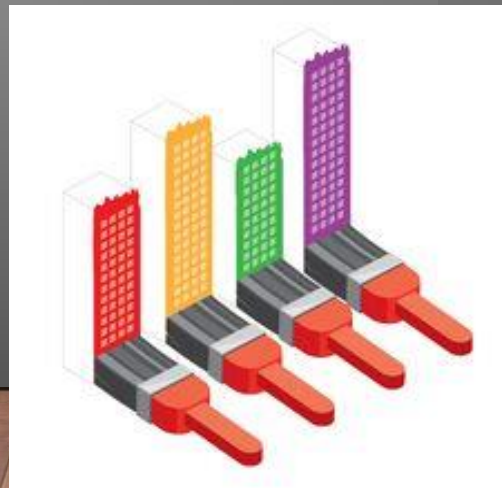
Property Information System for Minnesota (PRISM) is a parcel level data extraction of the real estate tax and land calculation modules required by the Minnesota Department of Revenue to be used for legislative decisions. The extraction currently occurs 4 times a year capturing the County's data at certain times of during the valuation and taxation process. April 1 is the due date for the Assessor's submission #1 and contains parcel level classifications and market values. September 1 is the due date for the Assessor's submission #2 and contains parcel level classifications, market value and tax capacity values. April 1 of the following year, is the due date for the Auditor's submission #3, containing parcel level classifications, market values, tax capacity values, tax capacity rates, tax and credit amounts. September 1 is the due date for the Auditor's mobile homes submission #4 which contains all the mobile home parcel data. Some of these submission files contain well over a million records of parcel data.



MINNESOTA E-TAX

Rewrite of Real Estate Tax package – currently 29 counties are participating in the rewrite, beginning installations in the 2nd quarter of 2019.

The rewrite will allow for a ‘point and click’ look and feel.



CAMA

ECL 010001000201411012013

CAMA400 SUMMARY SHEET ASSESSMENT 2014 PAYABLE 2015

THE NORTHERN MOST COUNTY IN MN 1-0001-000

Page 2 11/1/2013

1 769 0 0 0 0

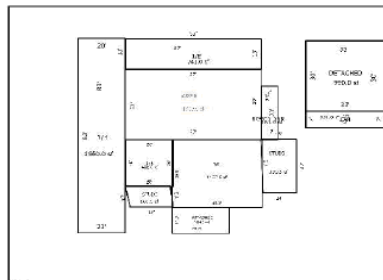
THIS DATA IS SUBJECT TO CHANGE

ITEM	TYPE#1	TYPE#2
ROOF.STYLES	FLAT	HIP
ROOF.COVERING	ASPHALT	
HEAT.TYPES	HOT.WATER	
BASEMENT/FOUND		

ITEM	B	1	2	3
IN.HOME.OFFICE			2	
DINING.ROOM		1		

ITEM	B	1	2	3
KITCHEN		1		
LIVING.ROOM		1		

ITEM	B	1	2	3
HOME.THEATER	1		1	



Record 01 of 01

HOUSE SUMMARY

Grade D7
 Condition GOOD
 Type
 # of Units
 Total Sq Ft
 Year Built
 Year Remdl
 Air Cond N

GARAGE SUMMARY

Grade
 Condition
 Type
 Sq Ft
 Year Built

LOT SIZE

Lot #1 120 X 100
 Lot #2 200 X 300

Building Adjustment 100.00% Sales Ratio Adjustment

ITEM	TYPE	YEAR BLT	EFF YEAR	GRADE/2nd CAT	HGT	LEN	WDT	QUAN/SQ FT	BASE RATE ADJUST	ADJ AMT	BASE RATE	PHY	FNC	ECO	PCT COMP	LINE ADJ	NET RATE	VALUE
DECKS	TREATED		1986					0			3.25	18					2.67	0
FIREPLACES	IS.IN.AVE		1986					1			1,500.00	18					1,230.00	1,200
AC	AC							2,150			2.33						2.33	5,000
BSMT.FIN			1986					100			3.45	18					2.83	300
HSE.EXTRA	ASPH.DRIVE		1986					100,000			.74						.74	74,000
SWIMMING.P	ABOVE.GR							1			5,000.00	18					4,100.00	4,100
POLE.BLDG	14'.HEIGHT			AG				2,000	INSULAT.DA	1.50	5.50						8.75	17,500
									HEAT...DA	1.75								
GARAGE	ATTACHED			D5				1,000			15.78						15.78	15,800
CATTLE								120	DR.ROOM.DB	1.00	333.54						333.54	40,000
GRAINBIN								40			15.12						15.12	600
OCCUPANCY	CHURCH							32,000			.00						.00	
CHURCH	D/GOOD				50			1,000			135.00						135.00	
CLUBHOUSE	D/GOOD				25			10			259.00						259.00	
COMM.FENCE	WOOD							1			.90						.90	

BUILDING TOTAL



PAYROLL

- Maintenance of the employee master file, deductions, accruals of vacation, sick, etc. , direct deposit information, GL interface, e-Time employee security file
- Hours can be inputted and/or interfaced from the e-Time module
- e-Time module allows the input of daily hours with an IN-OUT option and even through a cell phone
- Journal, check register, electronic pay stubs, direct deposit checks
- Variety of retirement reports and generation of PC files
- Interfaces to the general ledger module
- Pay stubs, accruals and employee information on the web portal
- Report generator module
- Generates W-2's, 1095 forms and detail for the 1094



Currently, 24 counties are participating in this module

HUMAN RESOURCES

- Maintenance of an employee database
- Interfaces and updates the current payroll module
- Generates notification emails to employees, supervisors and payroll clerk of changes made in the HR module
- Salary schedule is table driven and date sensitive to update the payroll wages
- ‘What If’ budget reports may be generated from the wage records
- Insurance schedule and open enrollment options
- Scanning and storage of employee records



Currently, 20 counties are participating in this module

EMPLOYEE PORTAL

- E-Time
 - *Quick time entry*
 - *In and Out time punch*
 - *Exception handling*
- View accrual balances
- Electronic time off requests
- Supervisor shortcut
 - *Approve from main portal*
 - *Only see direct supervision employees*
 - *Manage exceptions and leave requests*
- Current insurance selections
- View payroll information
 - *W-4*
 - *Rate of pay & YTD amounts*
 - *Recurring pay & deductions*
- Online Open Enrollment
 - *Make insurance elections*
 - *Manage dependents*
 - *Manage beneficiaries*
- Access check stubs, W-2's and 1095's
- Onboarding

HIGHWAY COSTING

- Table driven for valid employees, equipment, roads, inventory and costing codes
- Allows input of employees hours by equipment, roads, segments, inventory, and projects
- Employee e-time options
- Report Generator module
- Equipment depreciation and replacement reports
- Interfaces to the general ledger module
- Interfaces to the payroll and HR modules
- Generates Annual Financial Report



Currently, 19 counties are participating in this module

IFS

State wide financial package (IFSpi)

Currently, there 25 agencies participating in this module with two additional starting January of 2019.

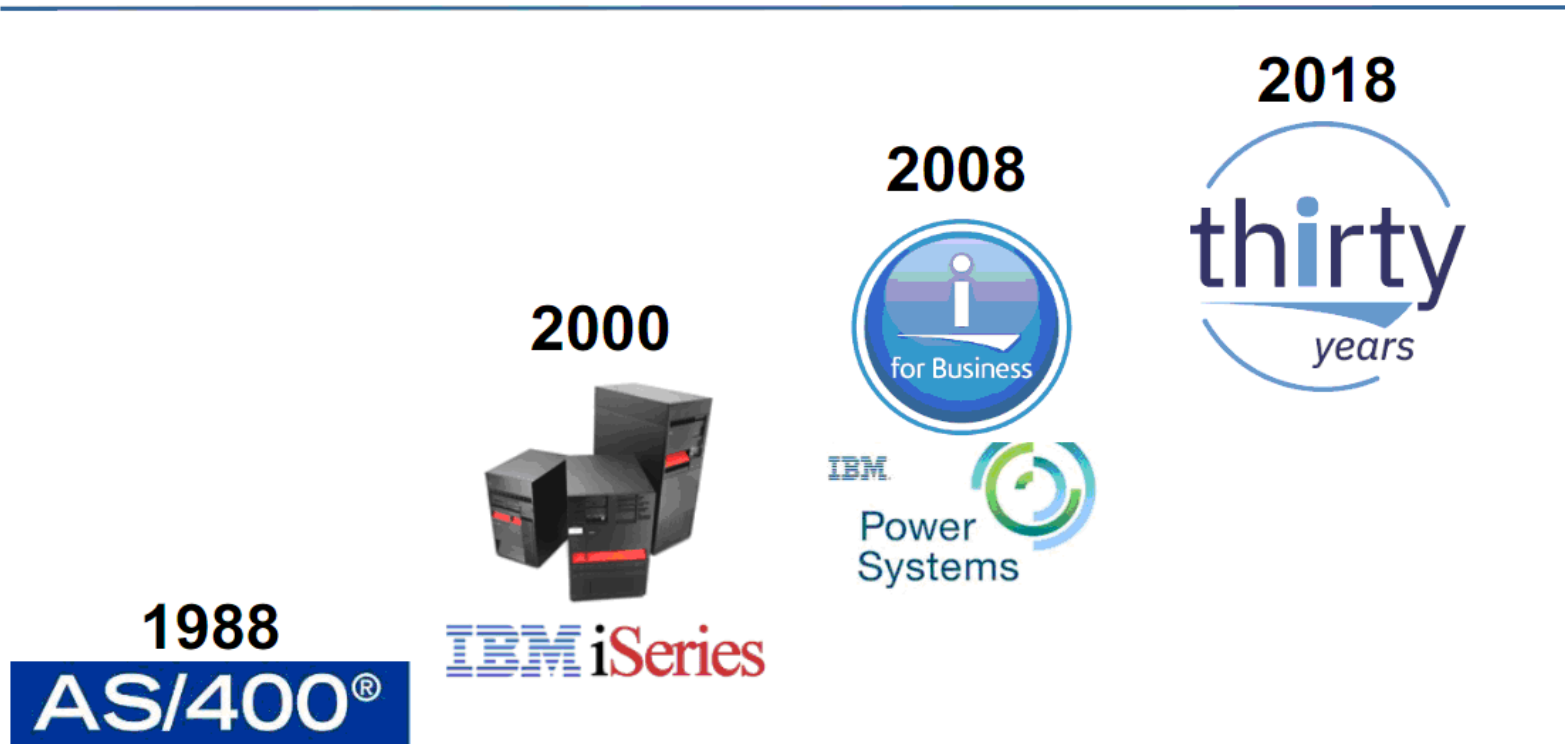
We offer support only.



Computer Professionals Unlimited's success is because of the communication that has been developed between CPUI and the counties we serve. We have a great group of counties and the name of the game is **SUPPORT!**

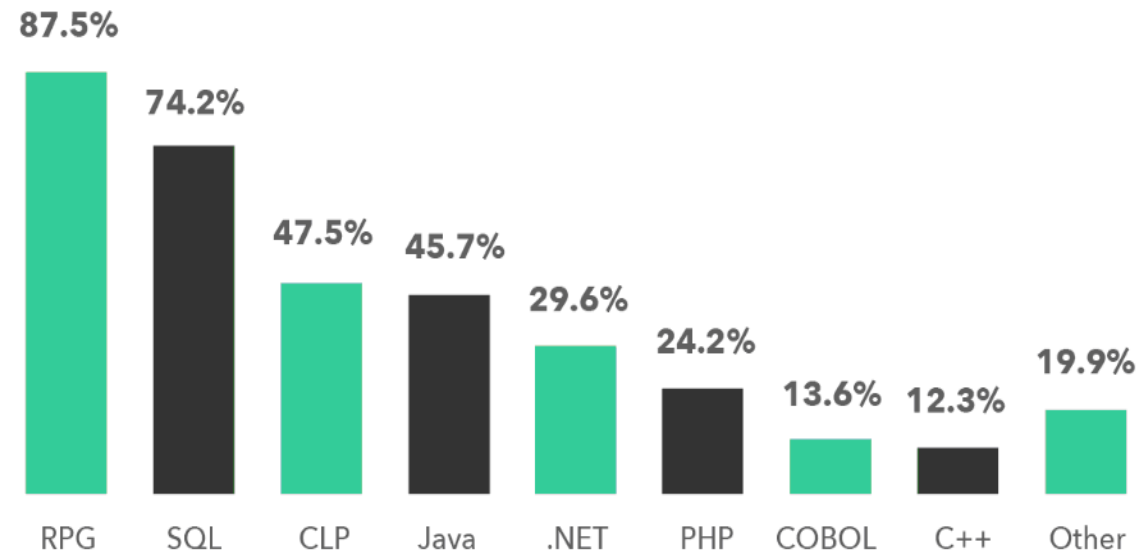


POWER SYSTEMS



ALLOWS MULTIPLE PROGRAM LANGUAGES...

What development languages do you use today for new development? Check all that apply.

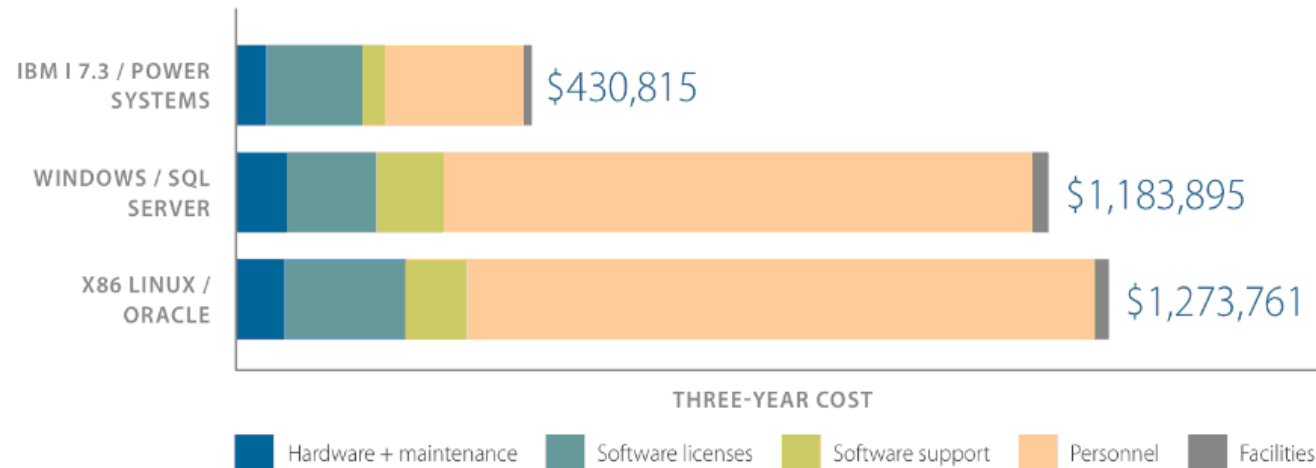


RPG is still popular, but it's fair to say that we have a good mix of others.

<https://www.helpsystems.com/resources/guides/ibm-i-marketplace-survey-results>

COST COMPARISON OVER THREE YEARS...

See the Big Picture



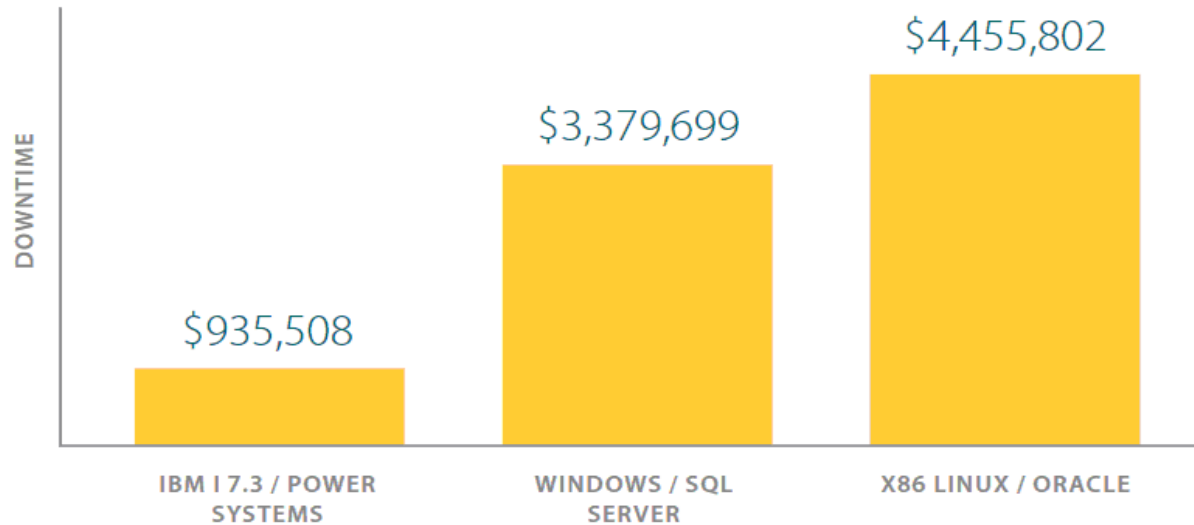
SOURCE: Quark + Lepton, IBM i on Power Systems for Midsize Businesses, May 2017

60+% Lower Total Cost of Ownership



RELIABILITY OF THE IBM I SERIES...

Downtime is an Expense, not a Cost of Doing Business



SOURCE: Quark + Lepton, IBM i on Power Systems for Midsize Businesses, May 2017

3 - 4X more reliable



QUESTIONS?

